



Trilby Close, Ashbourne

Two-bedroom terraced
house
available to buy through
shared ownership

“

A home of your
own at a price you
can afford

”

ncha

Specifications

Kitchen

- Fitted modern kitchen
- Integrated oven and hob
- Stainless steel extractor hood
- Vinyl flooring

Bathroom

- White bath suite with chrome fittings
- Tiling to ceiling around the bath
- Shower over bath
- Glass shower screen
- Vinyl flooring

Heating

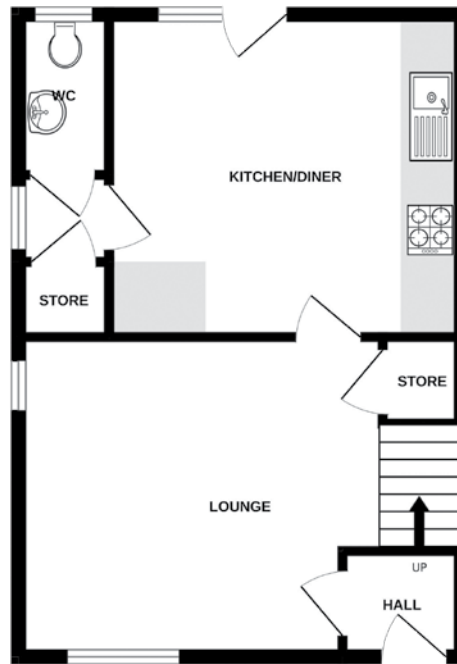
- Air source heat pumps
- Underfloor heating
- Double glazed windows

External

- Allocated off-street parking
- Enclosed rear garden
- Solar panels

Decoration

- White emulsion walls and ceilings
- White gloss painted woodwork



Ground floor



First floor

Energy assessment

- Predicted energy assessment – A

📍 How to find us

These new homes are located on Trilby Close in Ashbourne, Derbyshire. If using a SatNav, the postcode is DE6 1AR

🏠 Buying more shares

The homes are sold on a standard 990 year shared ownership lease, so you can purchase more shares to 100% and acquire the freehold.