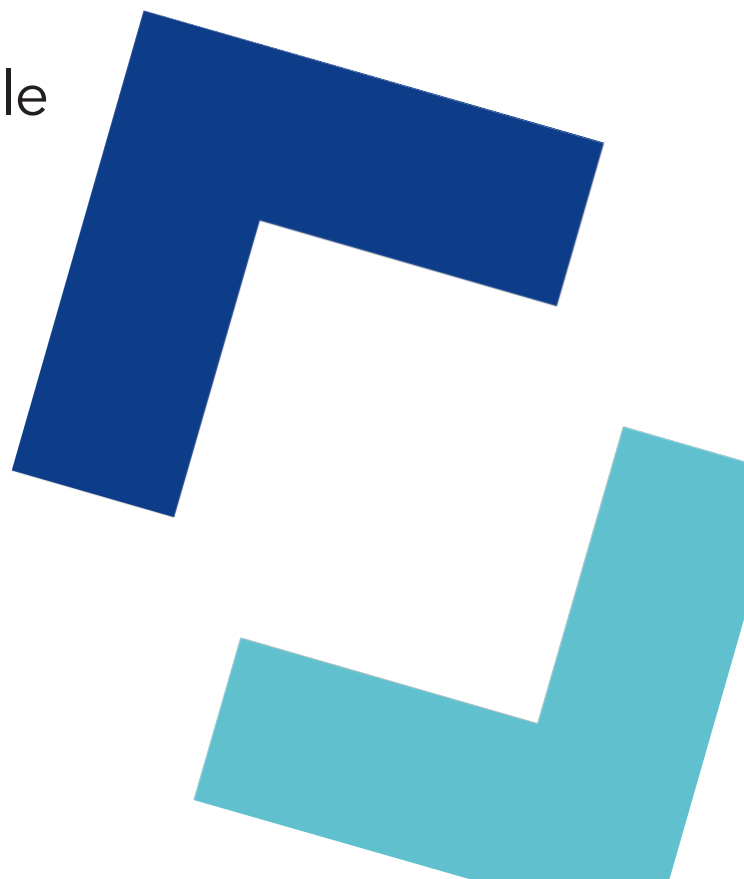




Farnborough Road, Clifton

One-bedroom flat
Independent living for people
aged 55 or over

 ncha



Specifications

Kitchen

- Fitted modern kitchen
- Integrated oven and hob
- Stainless steel extractor hood
- Vinyl flooring

Shower room

- Wet room with walk-in shower
- Support aids from Invisible creations
- Vinyl flooring

Heating

- Electric - Air Source Heat Pumps
- Double glazed windows

External

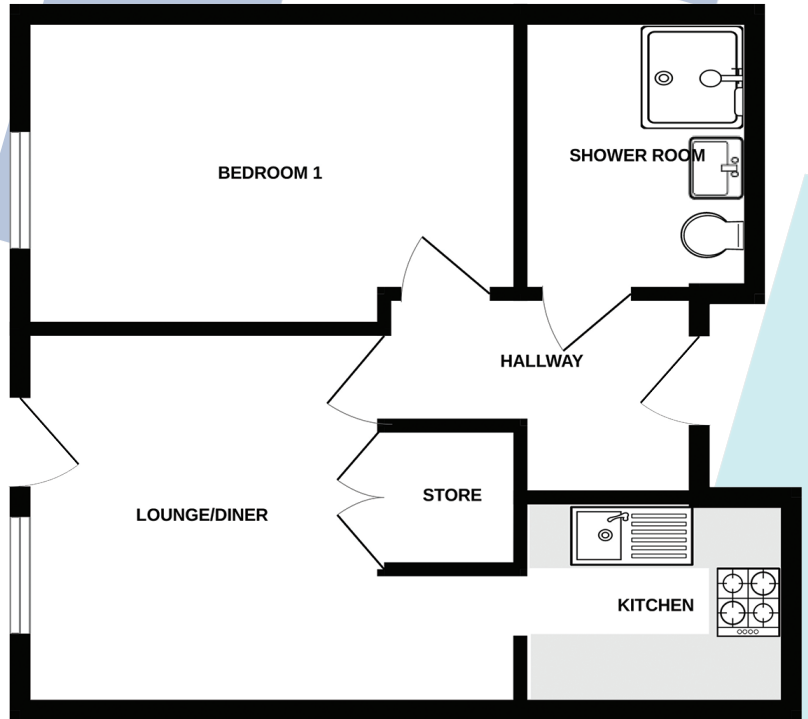
- Patio or balcony
- Communal car parking
- Communal garden

Decoration

- White walls and ceilings
- White gloss painted woodwork

Other

- Lift
- Scooter storage



Energy assessment

- Predicted energy assessment – A

Key dimensions

Room	Dimensions
Lounge/dining	3.197m x 4.512m
Kitchen	2.395m x 2.690m
Bedroom 1	4.320m x 2.750m

Any measurements quoted are approximate and must be checked on site and against the layout, which may vary due to unforeseen circumstances. Floor plans may be mirror handed. These details have been produced for illustrative purposes only and does not form any part of a contract or constitute an offer. Actual specification may vary from that shown in floor plan.

How to find us

The flats are currently being built on the old South Nottingham College site off Farnborough Road in Clifton in Nottinghamshire. If using a SatNav, the postcode is NG11 8LU.